

# Rolling Structures

Williams Art

17 – 29 April 2012

[www.williamsart.co.uk](http://www.williamsart.co.uk)

Matthew Howard

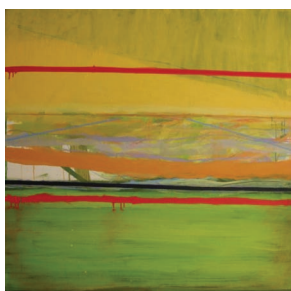
Simon Jowitt

Jonathan Lloyd

Doug Fitch

Four artists whose work explores the relationship between form and movement which lies at the heart of traditional drawing

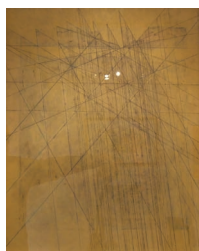
*Clockwise from window:*



Matthew Howard  
*Heat Bars. Backing rain  
(from Sullington hill)*  
Oil on canvas, 100 x 100 cm



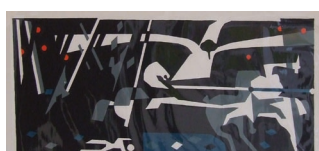
Matthew Howard  
*The School of Love  
After Correggio*  
Drypoint, 41 x 54 cm  
NFS



Simon Jowitt  
*Study of the human head*  
Oil and graphite on panel  
65 x 80 cm  
NFS



Jonathan Lloyd  
*The rout of San Romano  
(the unhorsing of Bernardino  
della Carda)*  
Oil on panel, 127 x 62 cm



Jonathan Lloyd  
*Niccolo da Tolentino  
Commanding the battle of  
San Romano*  
Woodcut, 61 x 40 cm



Jonathan Lloyd  
*The unhorsing of Bernardino  
della Carda*  
Woodcut, 61 x 40 cm



Jonathan Lloyd  
*Micheletto da Cotignola  
attacking the Sienese rear*  
Woodcut, 61 x 40 cm



Jonathan Lloyd  
*Falls at Routing Linn*  
Acrylic on board, 42 x 40 cm



Jonathan Lloyd  
*Falls at Routing Linn*  
Charcoal, 54 x 51 cm



Matthew Howard  
*The sky as the ocean,  
the land as the sea*  
Oil on canvas, 120 x 100 cm



Jonathan Lloyd  
*Up Periscope (Regatta)*  
Woodcut, 57 x 46 cm

# Rolling Structures

Williams Art

17 – 29 April 2012

[www.williamsart.co.uk](http://www.williamsart.co.uk)

*Continuing clockwise*



*The mirror*  
Acrylic on panel  
58 x 85  
NFS



*The coming spring*  
(studio windows)  
Oil on canvas  
120 x 120 cm

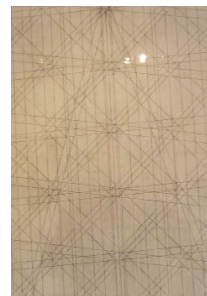
Simon Jowitt  
*The Mirror*  
Mixed media  
Editions of 12, made  
to order, framed only



*Rococo version*  
58 x 77 cm



*Classical version*  
58 x 77 cm



*Cartoon for the mirror*  
58 x 77 cm  
NFS



*Romantic version*  
Mixed media  
58 x 77 cm



Jonathan Lloyd  
*Snow clouds over Wooler*  
Woodcut  
50 x 53 cm

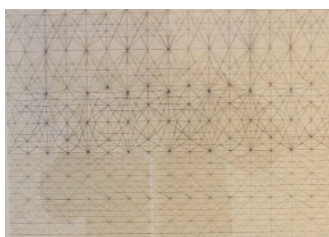
# Rolling Structures

Williams Art

17 – 29 April 2012

[www.williamsart.co.uk](http://www.williamsart.co.uk)

*Central gondolas:*



Simon Jowitt  
*Cartoon for Thunderbolt*  
Pencil on paper  
48 x 39 cm  
NFS



Simon Jowitt  
*Study for Thunderbolt*  
Mixed media on board  
48 x 39 cm



Simon Jowitt  
*The Bridge of Sighs at Cambridge*  
Woodcut, 34 x 42 cm



Jonathan Lloyd  
*Rising Wind. Howick*  
Woodcut, 50 x 42 cm



Jonathan Lloyd  
*Ford Church seen through trees*  
Woodcut, 36 x 30 cm



Simon Jowitt  
*The Genie*  
Mixed media on board  
40 x 50 cm



*Study for the rout of San Romano*  
Gouache on board  
60 x 39 cm



*Flodden Field*  
Watercolour on board  
56 x 39 cm

# Rolling Structures

Doug Fitch

Wood-fired slipware pottery

Williams Art

17 – 29 April 2012

[www.williamsart.co.uk](http://www.williamsart.co.uk)

Please enquire about designs, pricing and availability

